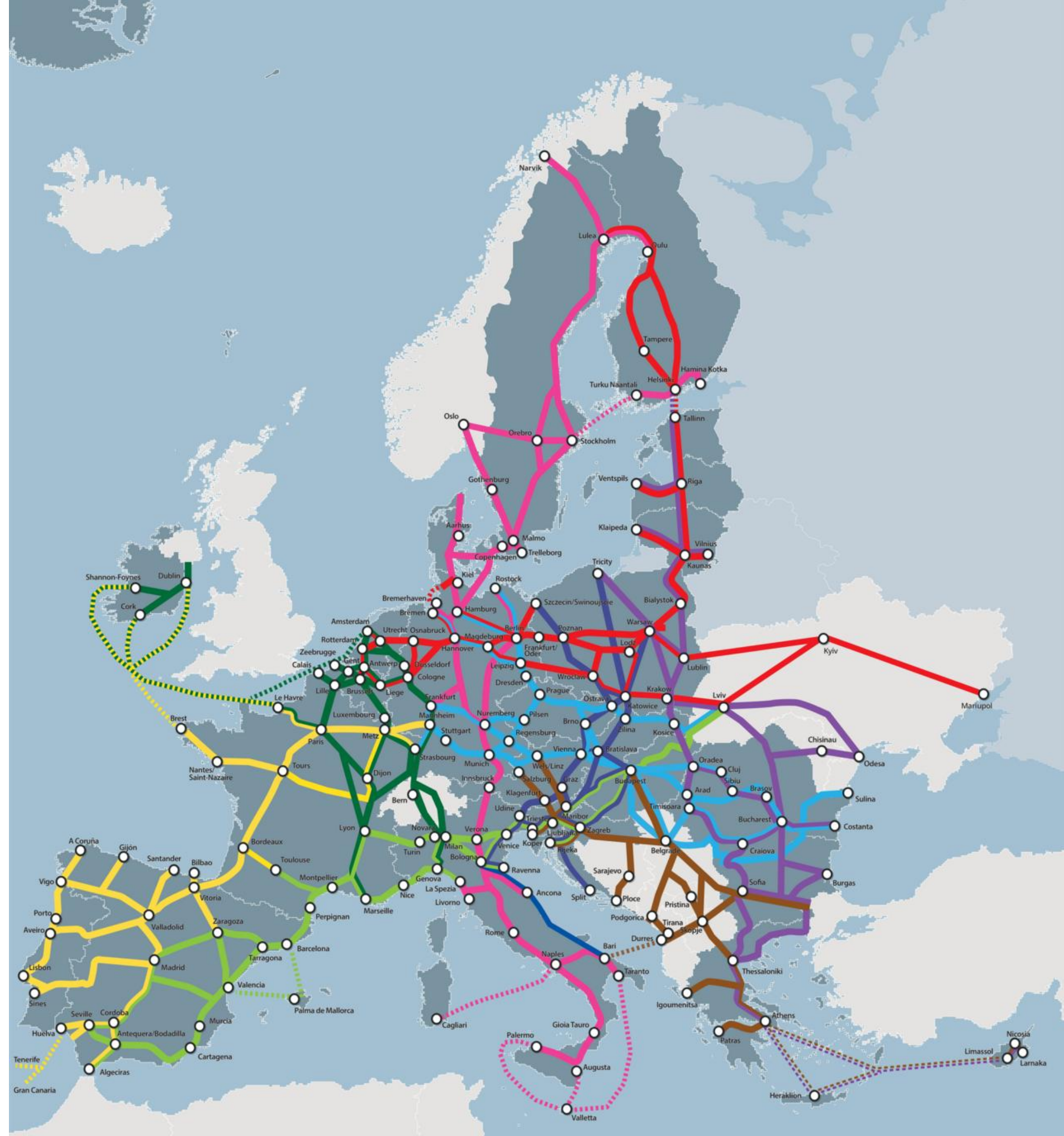


Connecting the TEN-T Dots:

Urban Nodes, SUMP's and UMIs
in Practice

Marko Stančec
 Project Coordinator | Climate-Neutral
 Cities Taskforce Coordinator |
 Urban Nodes Taskforce Co-coordinator

mstancec@polisnetwork.eu



Where we stand?

2026 -
431
Urban
Nodes
Today

2030 -
Multimodal
Passenger
Hubs in
Urban
Nodes

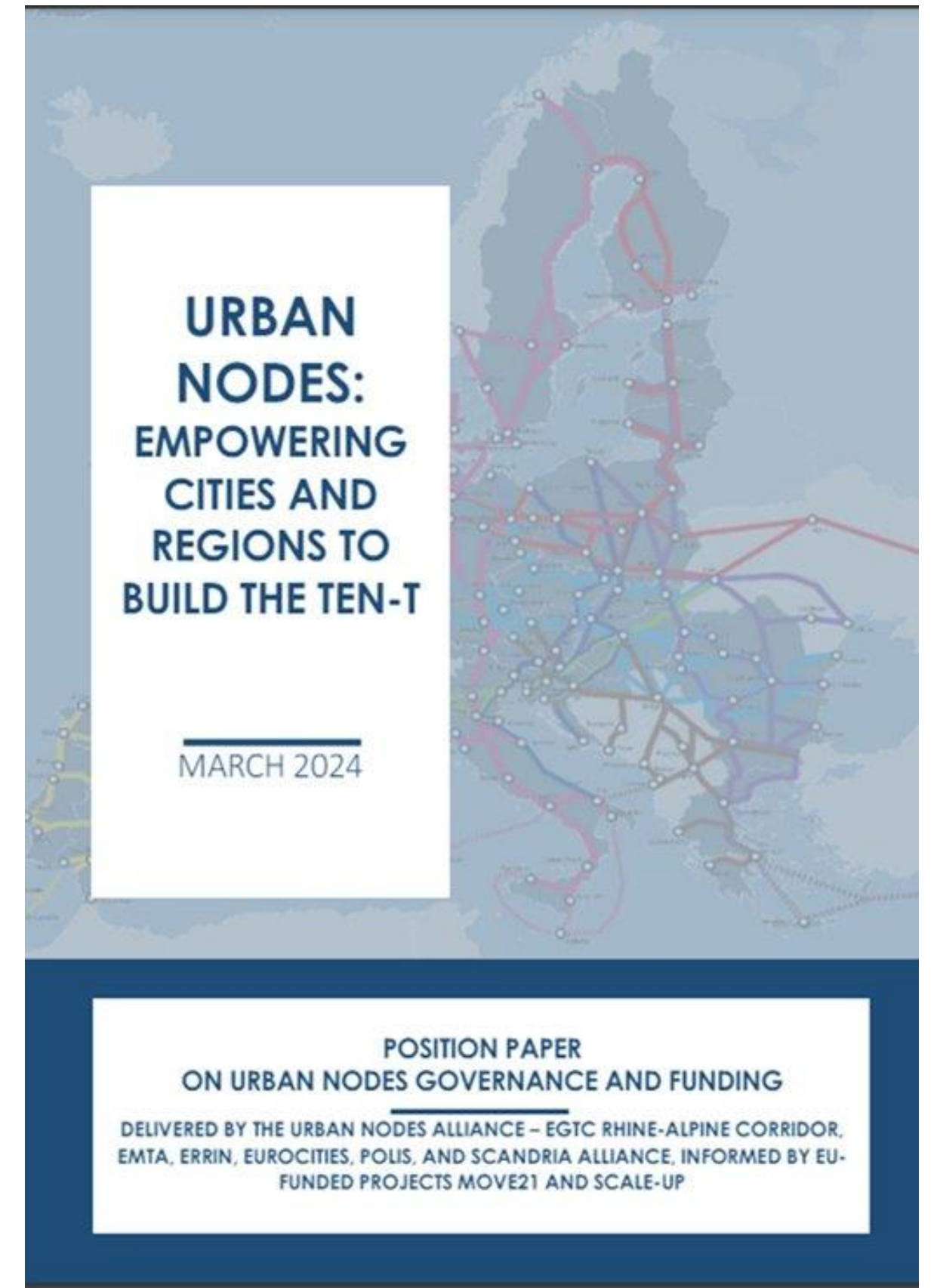
2027 -
Urban
Nodes
SUMP
UMIs

2040 -
Multimodal
Freight
Terminals in
Urban
Nodes



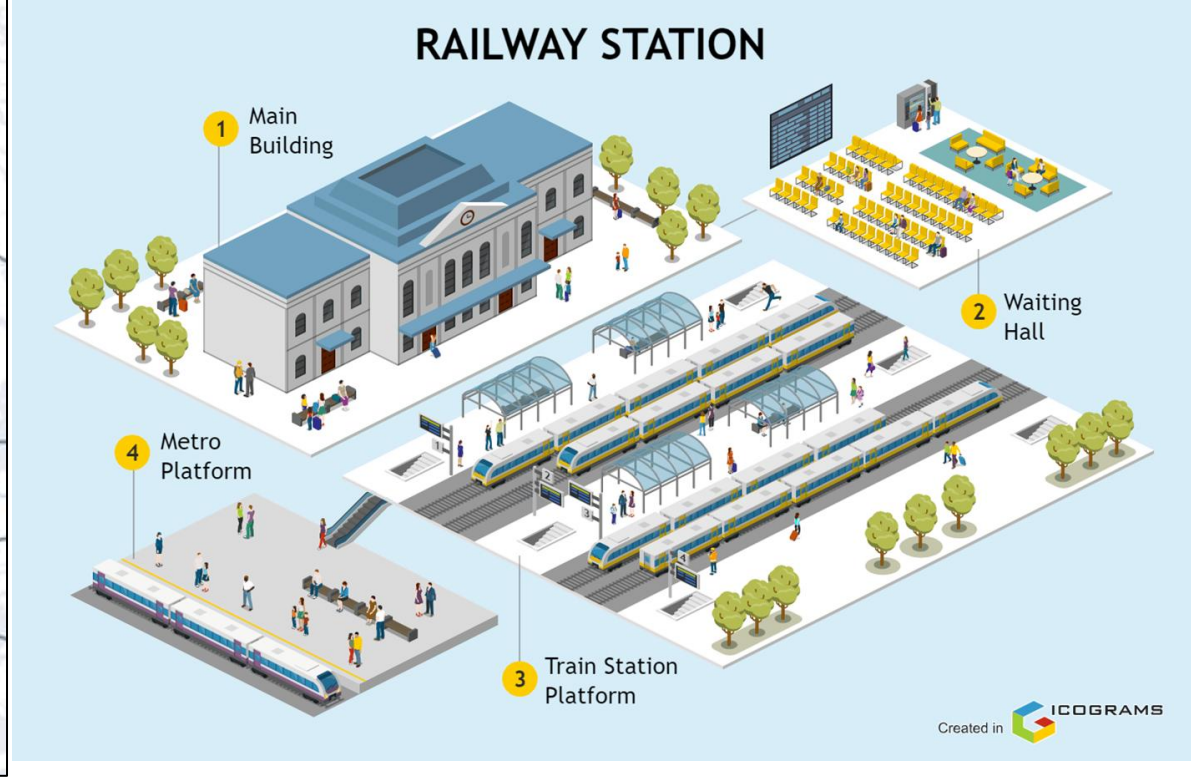
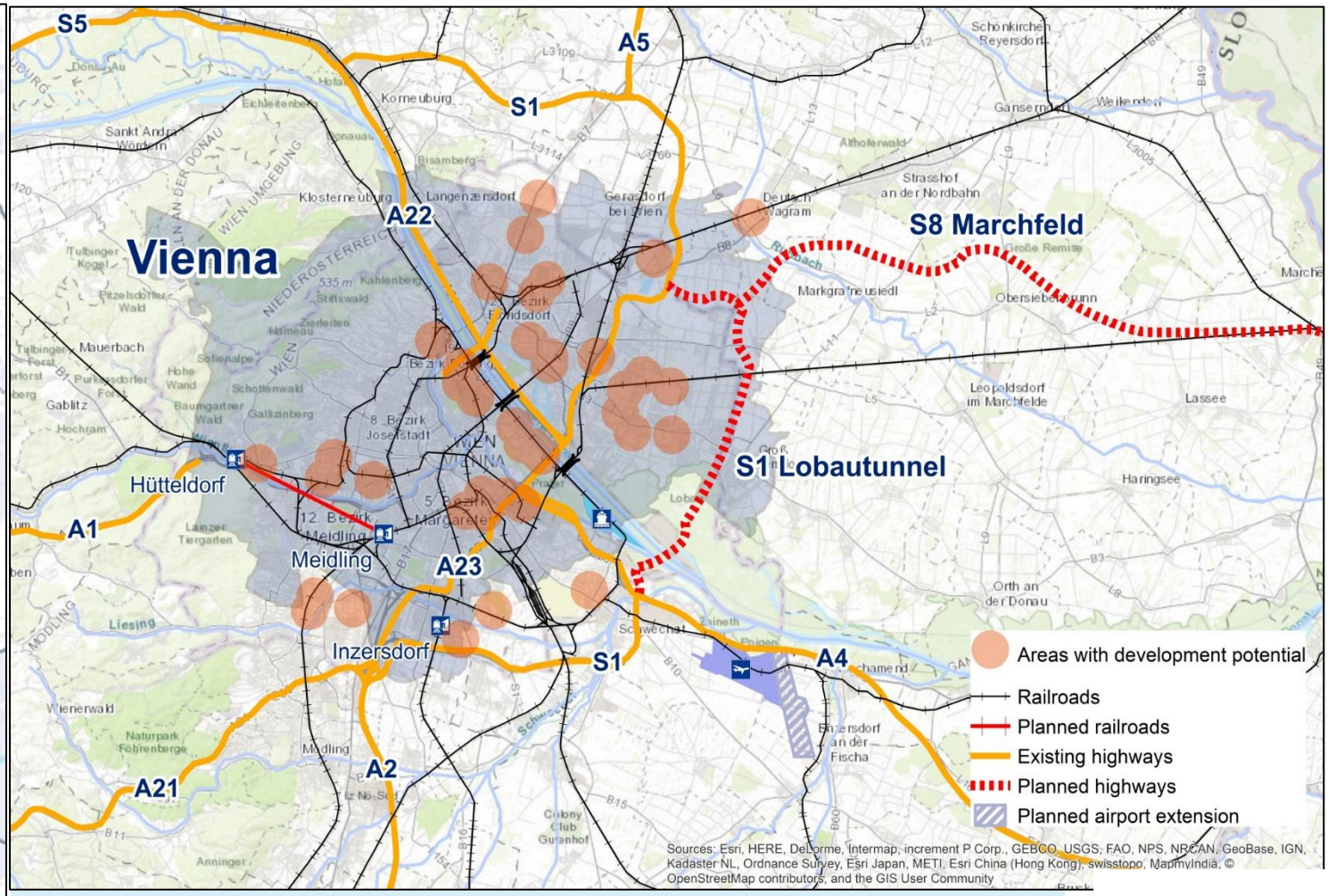
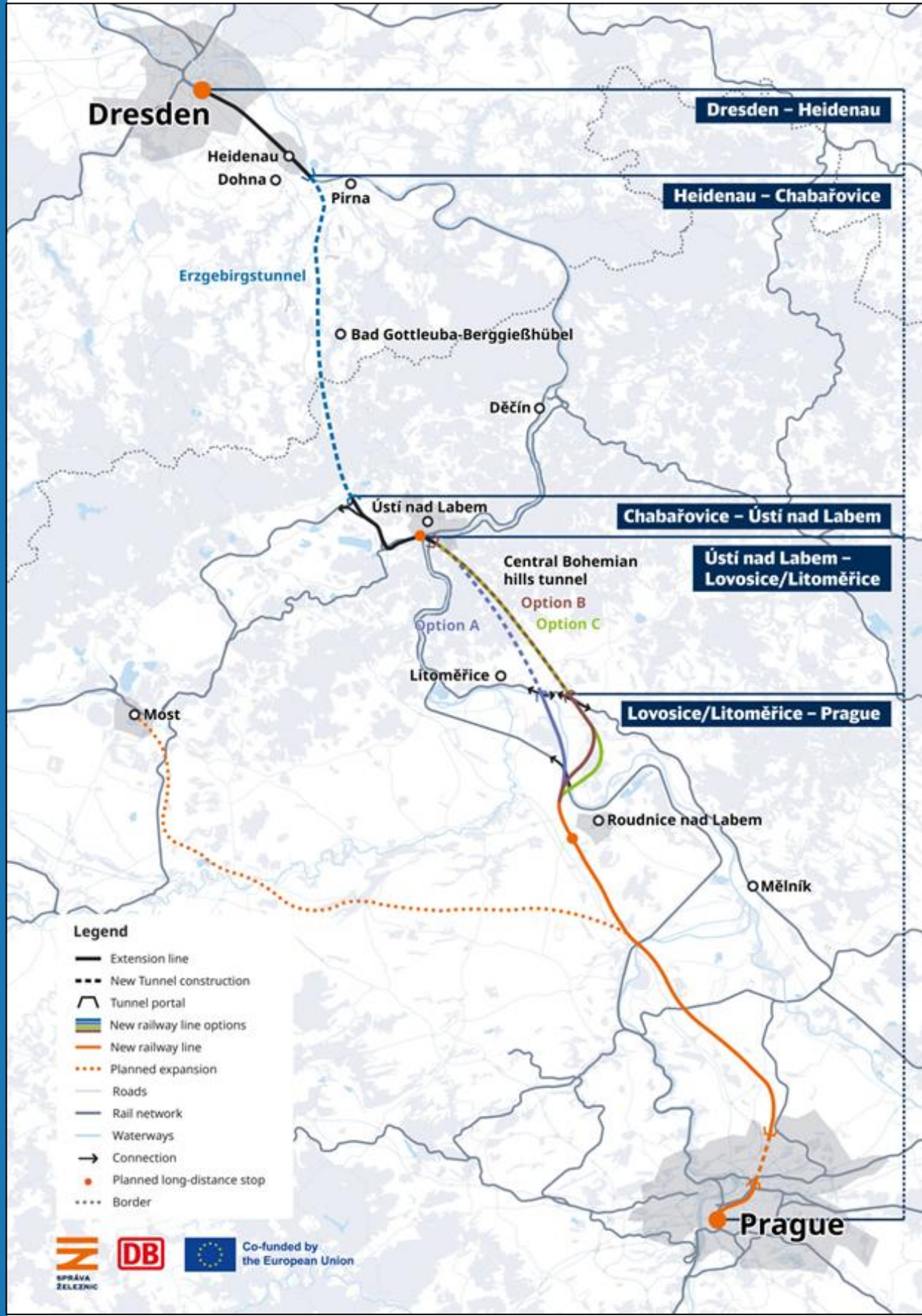
Urban Nodes on the forefront

- By 2027, each urban node is expected to have a Sustainable Urban Mobility Plan (SUMP)
- By 2027, urban nodes are required to collect and submit urban mobility data to the European Commission.
- By 2030, the development of multimodal passenger hubs is required
- By 2040, each urban node is expected to have access to at least one multimodal freight terminal



<https://www.polisnetwork.eu/wp-content/uploads/2024/04/Urban-Nodes-Alliance-Empowering-cities-and-regions-to-build-the-TEN-T.pdf>

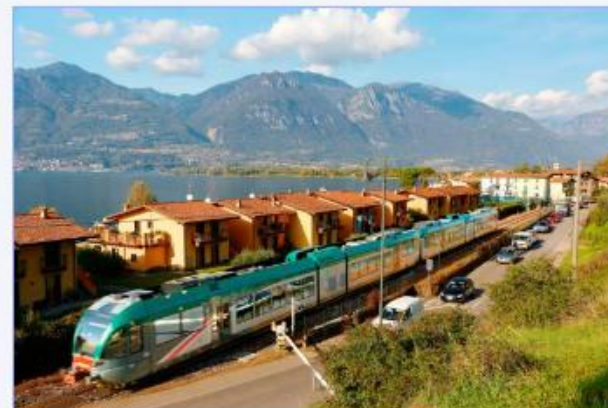
Strategic approach



National support programmes to create local SUMP capacity



Welcome! Step into our new virtual space for experts working on **sustainable urban mobility** across the European Union. Discover insights, trends, and sustainable solutions for city transport, and find out what else the [European Commission](#) does. **Join us** in shaping the future of urban mobility!



Case studies



Sustainable Urban Mobility Plans



Get involved

Urban Mobility Indicators

2027

Help urban nodes to:

- monitor the implementation of SUMP's and provide feedback to cities and stakeholders
- monitor progress towards priorities identified in the TEN-T Regulation, including:
 - ✓ promoting efficient and **low-noise zero emission** transport and mobility, including greening urban fleets for passengers and freight;
 - ✓ increasing the modal share of **public transport and active modes** through measures (...) including safe and secure infrastructure for active modes;
 - ✓ promoting efficient, low-noise and low-carbon **urban freight** delivery;
 - ✓ increasing **accessibility and connectivity** between urban and rural areas, and access to smart, sustainable and affordable transport.



SUMP guidelines

What is in the SUMP Guidelines second edition?

- Practical roadmap for SUMP development
- Cornerstone of urban mobility planning in Europe for more than 10 years

What happened since then?

- Annex to the EU recommendations for NSSPs
- Annex V to the TEN-T Regulation
- 2nd and 3rd generation SUMPs being prepared by European Cities



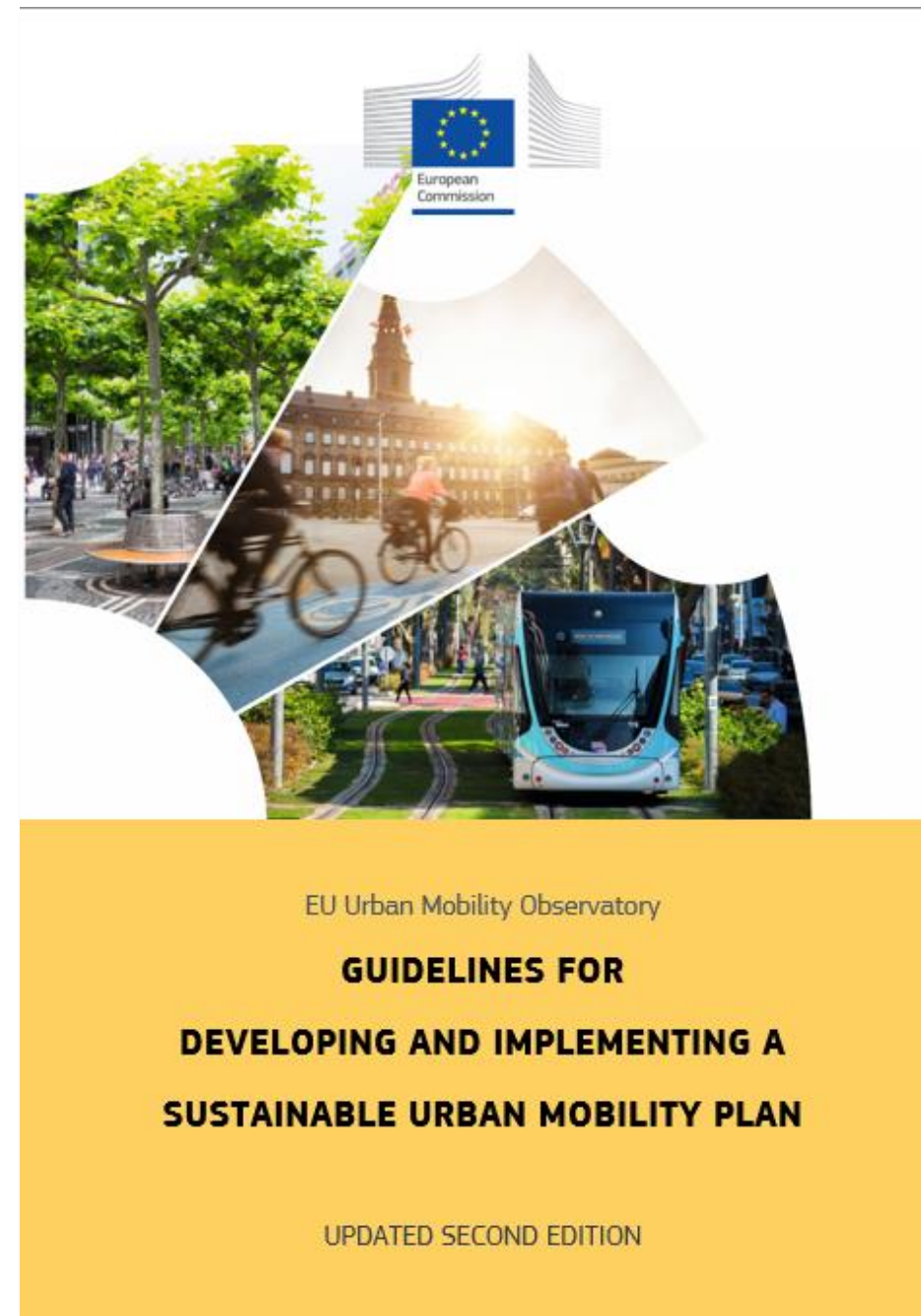
COMMISSION RECOMMENDATION
on National Support Programmes for
Sustainable Urban Mobility Planning
Annex: A concept for SUMPs

Revised TEN-T Regulation
Annex V



Why now?

- **New EU policy context**
 - TEN-T updated regulation, including Annex V.
 - Requirement for urban nodes to have a SUMP
- **Mobility trends** since 2019 & **technology shifts**
- **Climate deadlines** – 55 % GHG cut by 2030, net-zero by 2050.



What is it?

- It aims to **support all cities** in developing their SUMPs, with:
 - Further clarifications, new links and fresh examples
- It is **not a clarification to the TEN-T requirements.**
- No overhaul of the 12-step SUMP cycle and no new requirements!
- Based on **practitioners' feedback**

SUMP guidelines

Changes of Topics in more Detail

New. Update. Improvement.

New

- Update of the **SUMP Principles** to align with the EC 2023 SUMP Concept
- Alignment with the **TEN-T** and requirement for urban nodes
 - NSSPs support, planning with long-haul transport stakeholders

Update

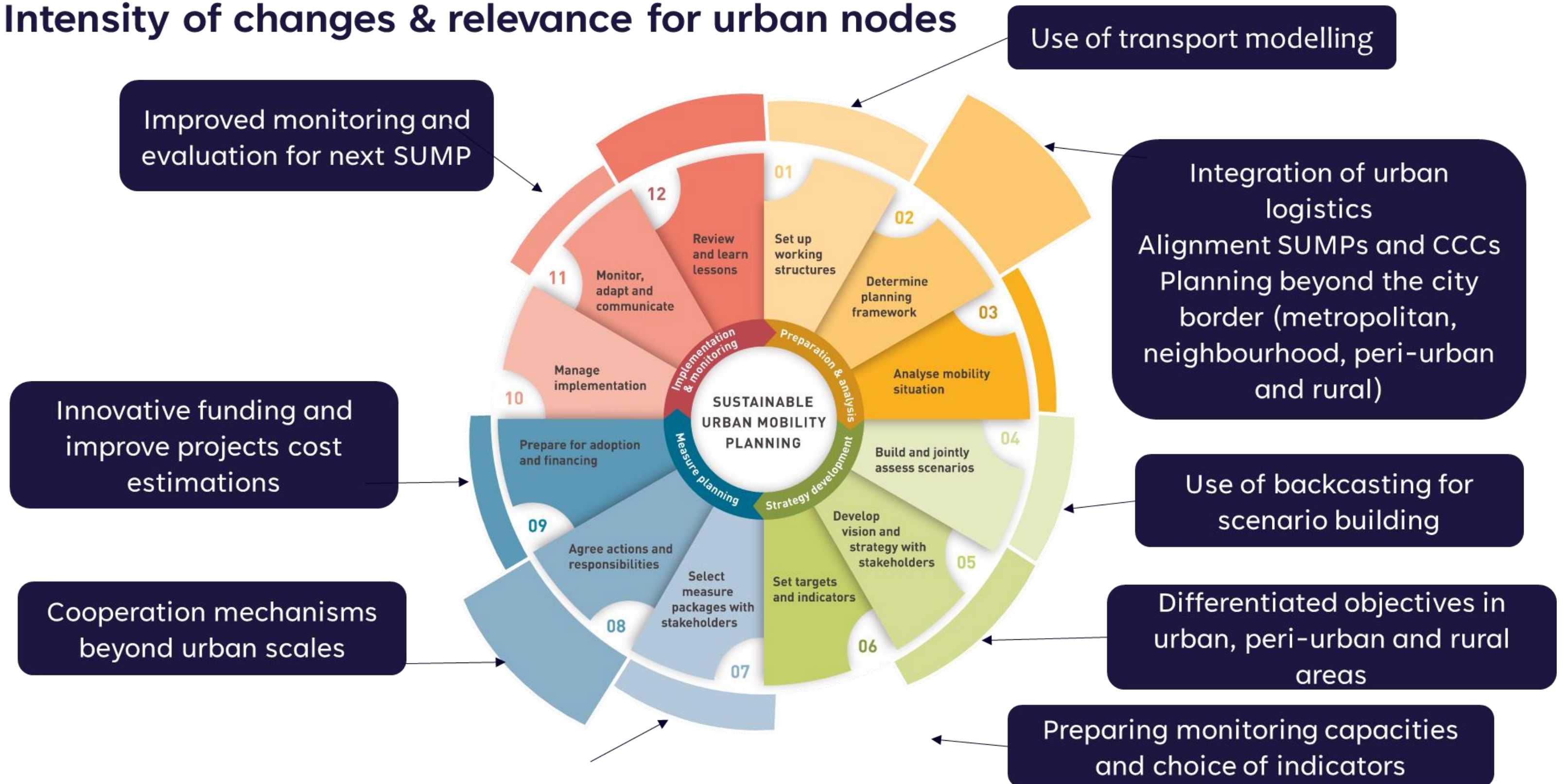
- Alignment with new **European policies** (climate, energy, green deal, ITS, etc.)
- Further integration of **data-based decision making** and planning
 - Transport modelling, data spaces, indicators, monitoring, evaluation

Improvement

- **Planning beyond the city borders**
 - Further inclusion of peri-urban and rural planning, including specific solutions and cooperation and collaboration models
- Further emphasis on **urban freight and logistics**
 - Additional specifications and engagement with logistics stakeholders
- Further emphasis on **inclusion and transport poverty**



Intensity of changes & relevance for urban nodes



About POLIS

POLIS is the network of European cities and regions working together to deploy innovative solutions for a more sustainable mobility.




Contact

Marko Stančec

Mstancec@polisnetwork.eu

POLIS
 Rue du Trône 98
 B-1050
 Brussels, Belgium
 Tel +32 (0)2 500 56 70
 polis@polisnetwork.eu
www.polisnetwork.eu

